

MODULAR OFFICE WALLS | FEATURE FACTS

1



AIR GAP @ TOP
between panels and ceiling will be determined by selected panel height, finished floor condition and your ceiling height.

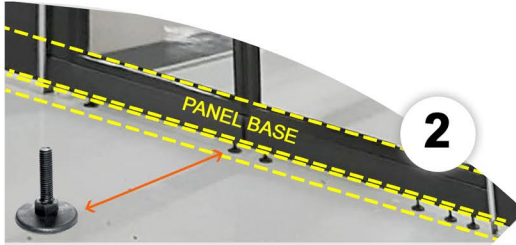
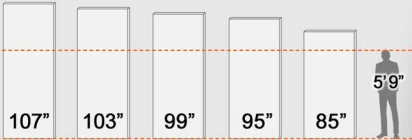
The tallest panel in our MOW product line is 107". If you need higher, just ask. The top of the panel is *not* ceiling attachable.

PANEL MATERIALS OPTIONS

► Mix & Match ◀

- Fabric / Hard Non-Tackable*
 - Fabric / Tackable
 - Fabric / Acoustical
 - Solid Color / Wood Grain Laminate
 - Tempered Glass / Frosted or Clear
- *default

PANEL HEIGHTS* OPTIONS



2

AIR GAP @ FLOOR
is mostly a result of the extension height of the floor leveling glides. When fully recessed @0.75" or fully extended @1.75".
Note: These panels do *not* sit upon, nor are they affixed to the floor.
The **panel bases** which sit directly above the glides are 5" high and can carry power & data cabling.

AVAILABLE DOOR TYPES

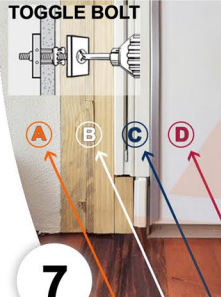
Sliding Doors for 36" Opening Connectable to: 36, 42, 48 & 60" Wide Panels



3

Glass Side Lighted & Keyed Locking Lever Handled Swing Doors

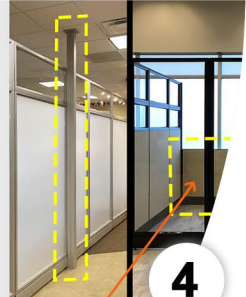
► Side Light Door Kits All @ 48" Wide ◀



TOGGLE BOLT
SIDE FIT
Panel frame anchored to wall w/toggle bolts.
Gap Wood Blocking
(by cubicles.com) required when opening & panel dims are not equal.
Wood painted to match panel trim. Painting performed by TBD.

7
A WALL
B WOOD BLOCKING
C WALL CONNECTOR
D PANEL

POWER POLE
12' Floor to Ceiling Power Pole to carry power & data lines & add minor stability to run of panels.



CONDITION AT WINDOW
By default we lower the panels parallel to the windows for natural light maximization and access.

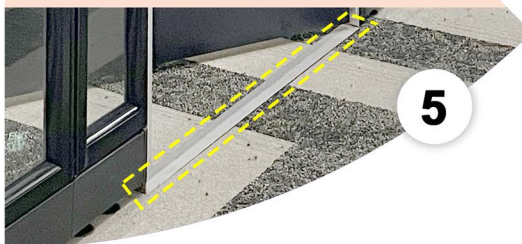
COEXISTENCE WITH EXISTING CONDITIONS
Panels height and distance from the existing building conditions must comply with building & fire codes.

DOOR THRESHOLD
needs a level floor for stability. Screw down into existing finished floor + double faced tape is typically required.

39" PANEL HEIGHT



6



5

8 * Stability Guidelines: Local code in seismic zones 3 or 4 may require panels over 6 feet to have floor plan approval by a certified structural engineer to ensure compliance with applicable building code standards. Due diligence and related engineering consultation fees are the client's responsibility.