



OFFICE DESIGN IDEAS BOOK FOR:

- DIRECTOR OFFICE SUITES
- MANAGER OFFICE SUITES
- CUBICLES
- BREAKROOM/PANTRY
- SEATING: TASK, GUEST, & PANTRY CHAIRS, & STOOLS

CCSICPRS

10,000 SQ. FT.

FT. LAUDERDALE, FL.



cubicles.com

we are so much more than cubicles

BEFORE



AFTER



2D OVERALL PROPOSED FURNITURE PLAN

[138] CUBES + [1] PRINT STATION

[2] DIRECTOR OFFICES – D1,D2:

- [2] U-SHAPE DESK – BOW FRONT

[5] MANAGER OFFICES – M:

- [6] 5'x6'-6" L-SHAPE DESK

[1] BREAKROOM:

- [5] 36" DIA REGULAR HEIGHT TABLES
- [5] 30" DIA BAR HEIGHT TABLES

[1] INTERVIEW ROOM:

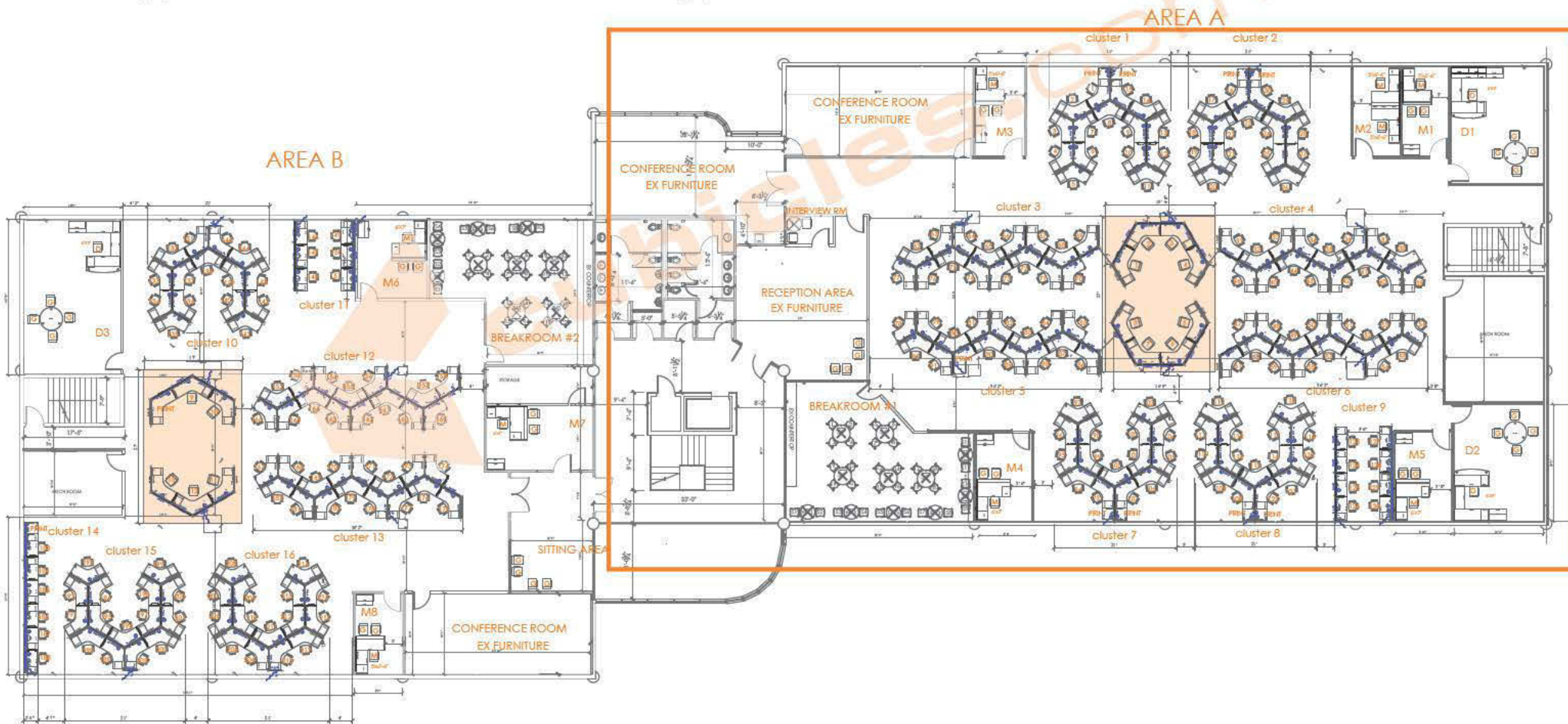
- [1] 30" DIA TABLE

[1] RECEPTION AREA:

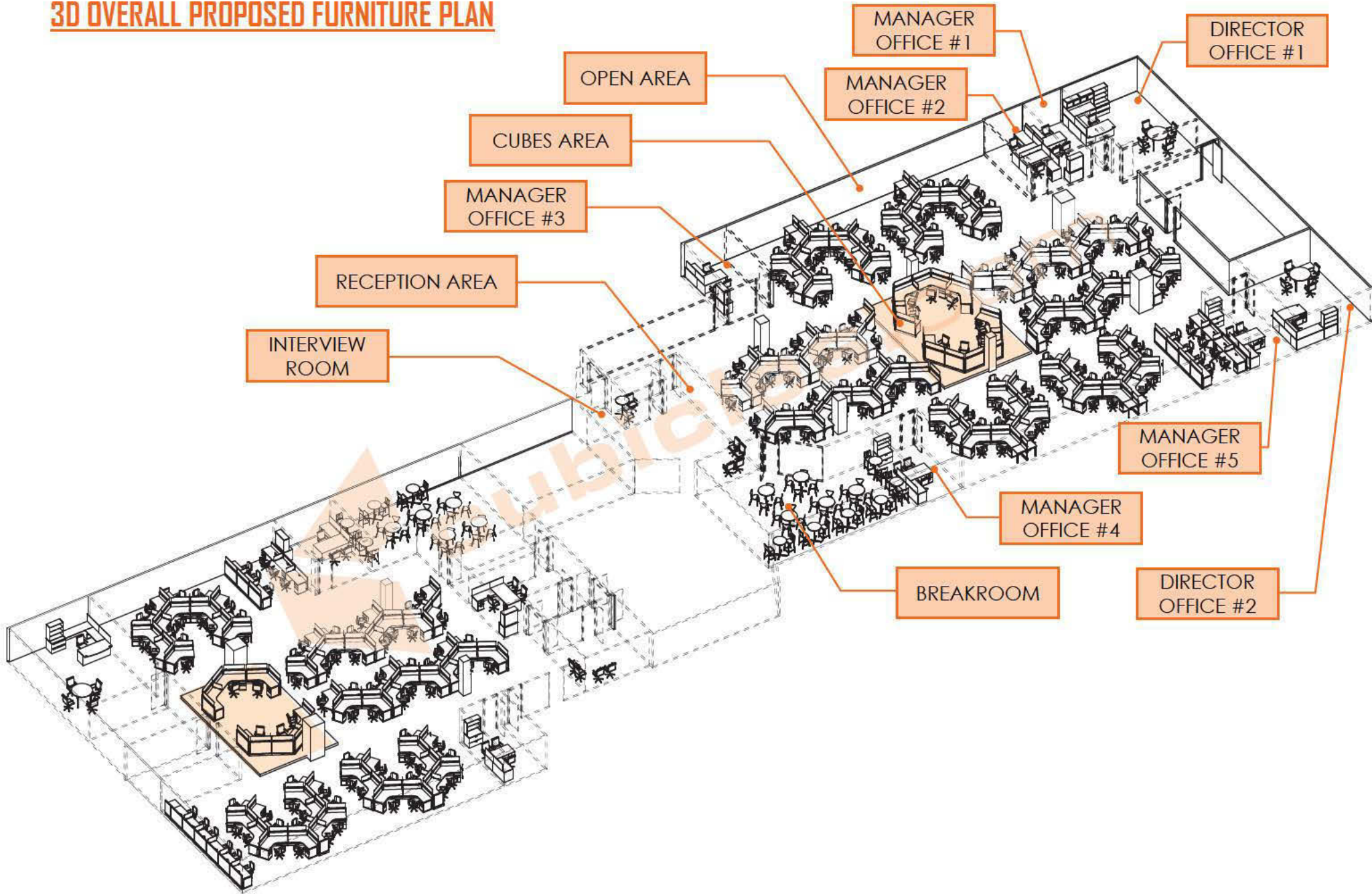
- [4] GUEST CHAIRS

SEATING:

- [146] TASK CHAIRS
- [22] GUEST CHAIRS
- [20] PANTRY CHAIRS
- [10] STOOLS



3D OVERALL PROPOSED FURNITURE PLAN



2D OVERALL

SPO OFFICE FURNITURE

[138] STATIONS + [1] PRINT STATION:

[53"H: 39"H FABRIC PANEL+14"H

FROSTED GLASS SCREEN]

MANAGER STATIONS

- [8] 48"x48"x 39"H [120Deg TOPS]

POWERED STATIONS

CLUSTERS 1,2,7,8:

- [15]/EA. 42"x42"[120Deg]

POWERED STATIONS

CLUSTERS 3,4:

- [16]/EA. 42"x42"[120Deg]

POWERED STATIONS

CLUSTER 5:

- [15] 42"x42"[120Deg]

POWERED STATIONS

- [1] 42"x42"[120Deg]

PRINT STATION

CLUSTER 6:

- [15] 42"x42"[120Deg]

POWERED STATIONS

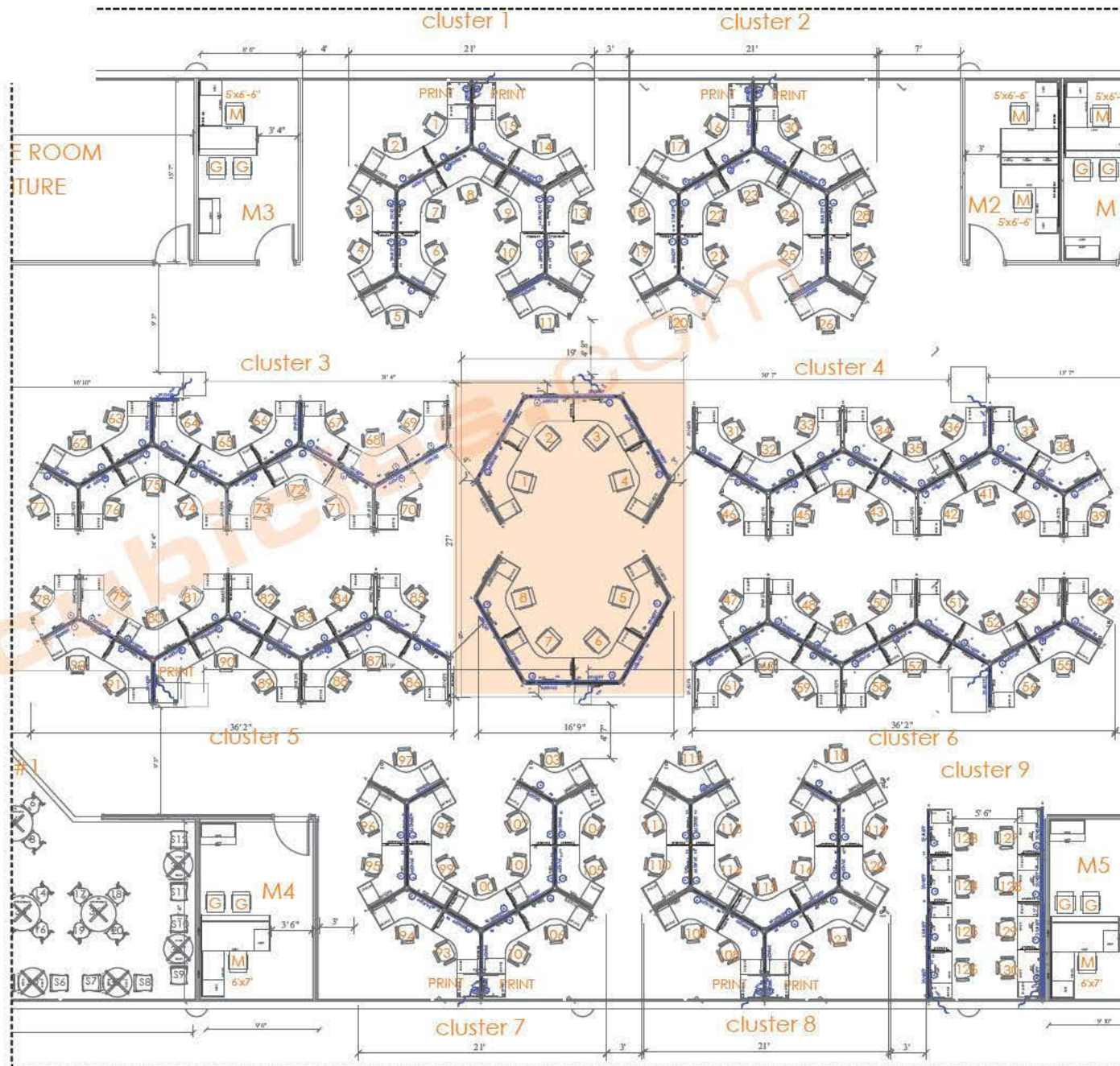
CLUSTER 9:

- [8] 24"x48" STRAIGHT

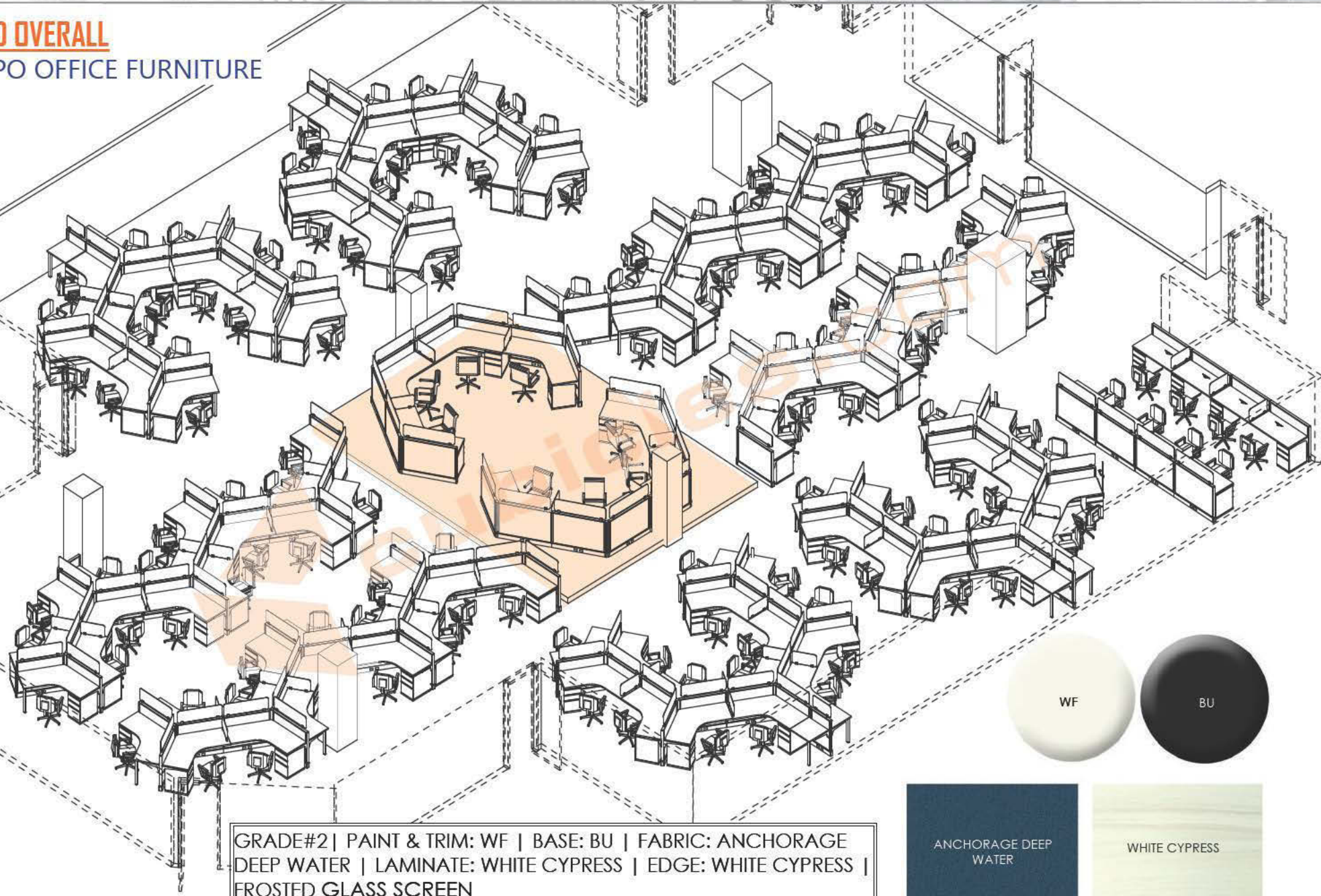
POWERED STATIONS

ACCESSORIES:

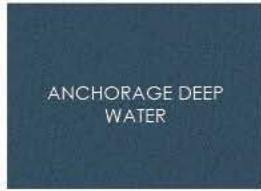
- o [1] BOX/BOX FILE PEDESTAL/EA
- o 24"W FROSTED GLASS SCREENS
- o 42"W FROSTED GLASS SCREENS
- o 48"W FROSTED GLASS SCREENS



3D OVERALL SPO OFFICE FURNITURE

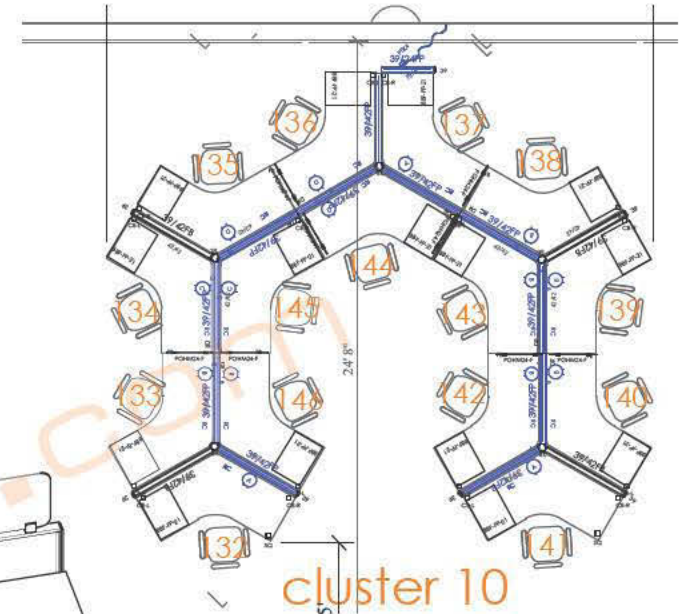
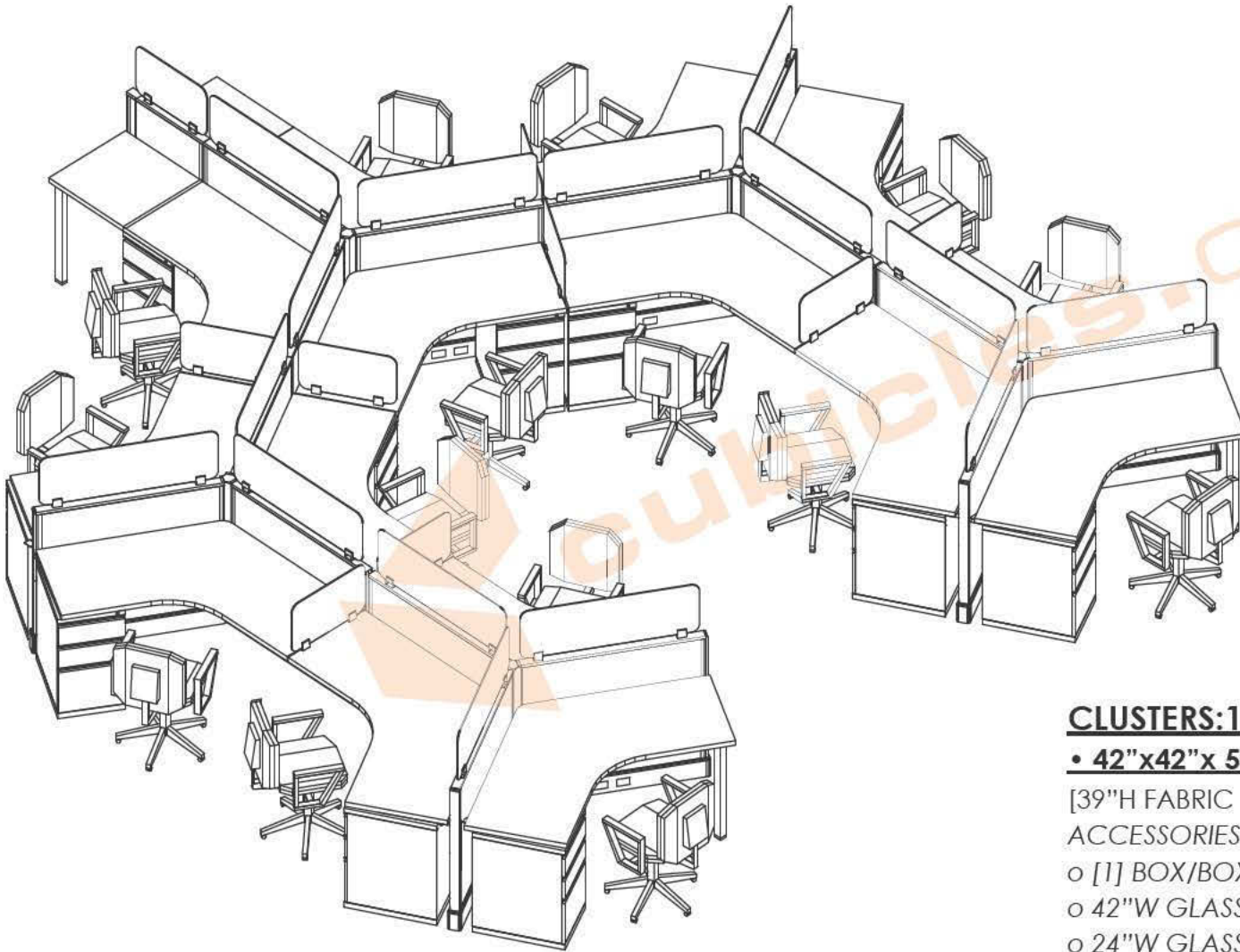


GRADE#2 | PAINT & TRIM: WF | BASE: BU | FABRIC: ANCHORAGE
DEEP WATER | LAMINATE: WHITE CYPRESS | EDGE: WHITE CYPRESS |
FROSTED GLASS SCREEN



TYPICAL #1 - 3D CLOSE-UP

SPO OFFICE FURNITURE



CLUSTERS: 1, 2, 7, 8

• 42"x42"x 53"H [120Deg TOPS] POWERED STATIONS

[39"H FABRIC PANEL + 14"H FROSTED GLASS SCREEN]

ACCESSORIES:

- o [1] BOX/BOX FILE PEDESTAL/EA
- o 42"W GLASS SCREENS - PANEL MOUNTED
- o 24"W GLASS SCREENS - PANEL MOUNTED
- o 24"W GLASS SCREENS - DESK MOUNTED

TYPICAL #2 - 3D CLOSE-UP

SPO OFFICE FURNITURE

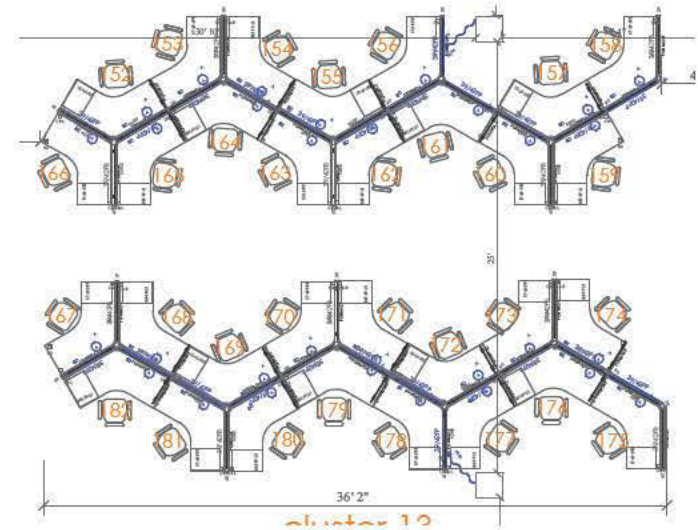
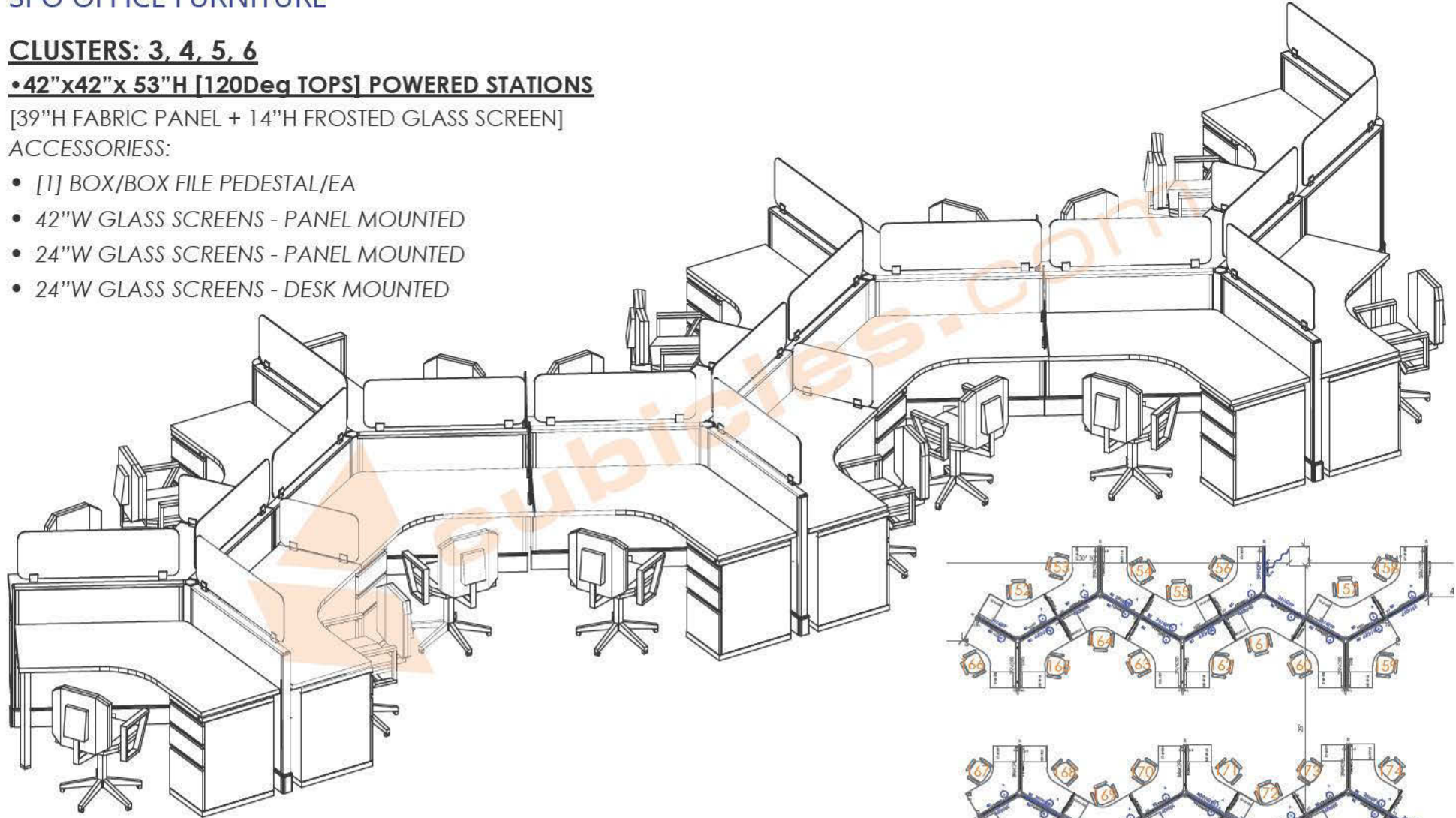
CLUSTERS: 3, 4, 5, 6

• 42" x 42" x 53" H [120Deg TOPS] POWERED STATIONS

[39" H FABRIC PANEL + 14" H FROSTED GLASS SCREEN]

ACCESSORIES:

- [1] BOX/BOX FILE PEDESTAL/EA
- 42" W GLASS SCREENS - PANEL MOUNTED
- 24" W GLASS SCREENS - PANEL MOUNTED
- 24" W GLASS SCREENS - DESK MOUNTED



OFFICE SUITES (DIRECTORS)

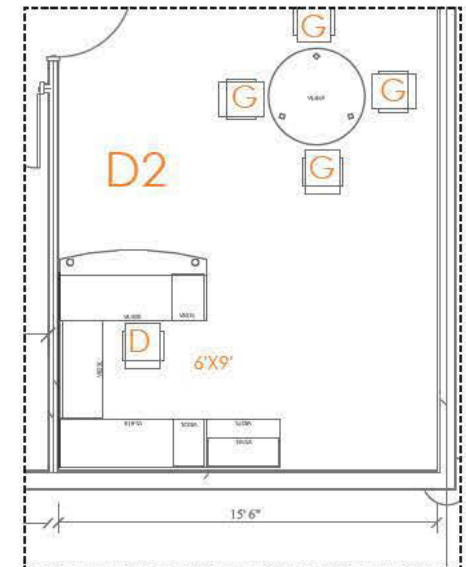
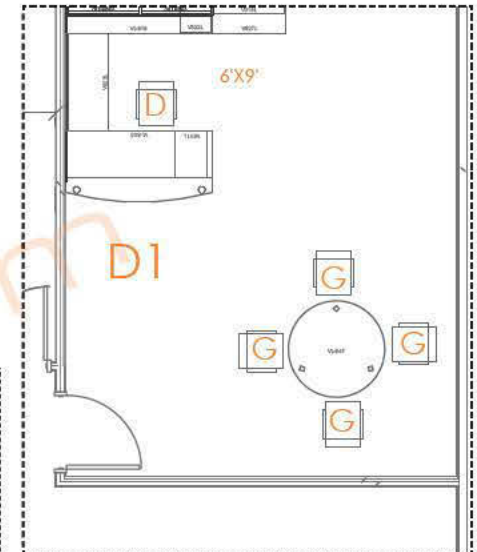
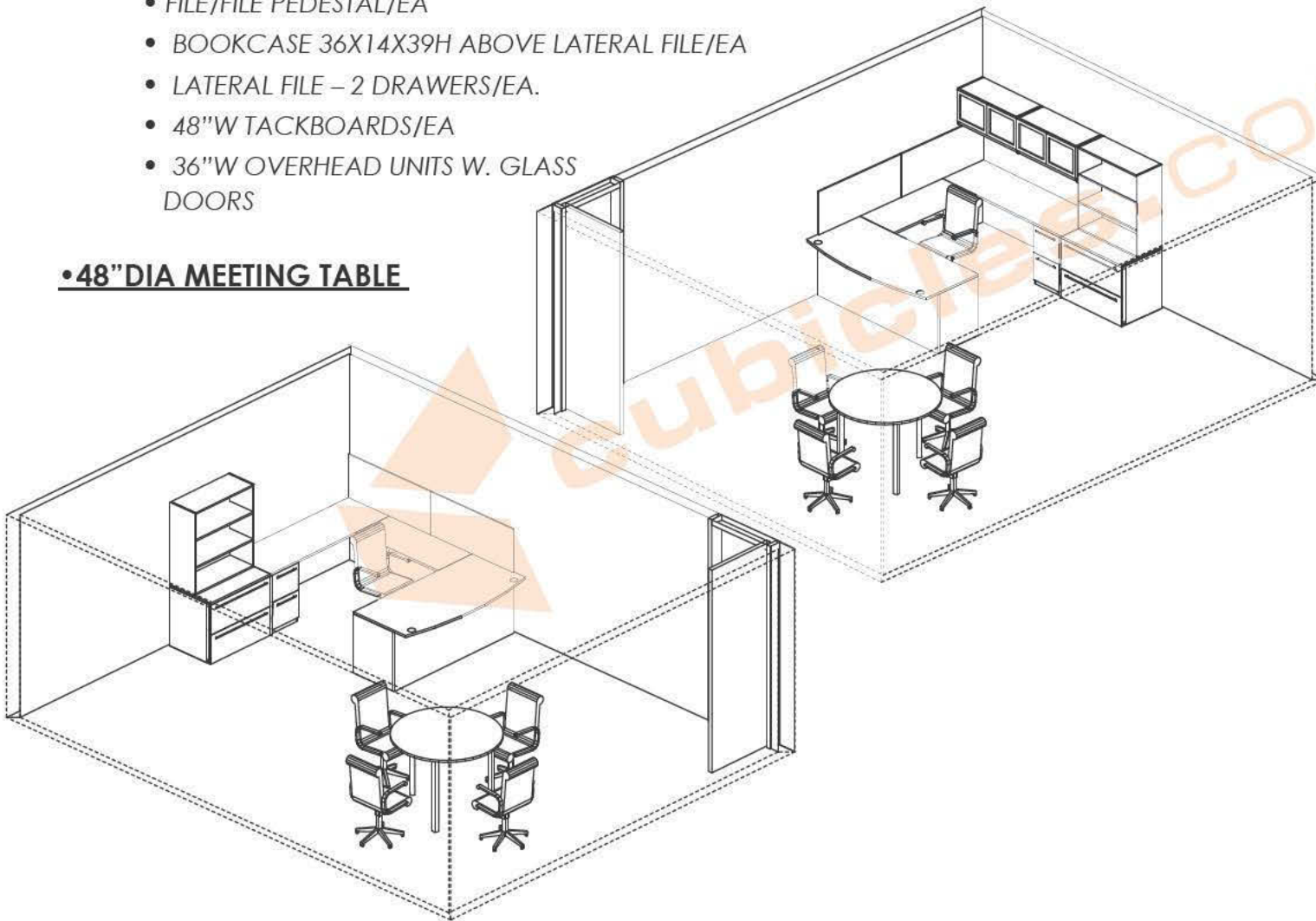
RHC LAMINATE

•U-SHAPE DESK – BOW FRONT

ACCESORRIES/EA:

- BOX/BOX/FILE PEDESTAL/EA
- FILE/FILE PEDESTAL/EA
- BOOKCASE 36X14X39H ABOVE LATERAL FILE/EA
- LATERAL FILE – 2 DRAWERS/EA.
- 48"W TACKBOARDS/EA
- 36"W OVERHEAD UNITS W. GLASS DOORS

•48" DIA MEETING TABLE



D-DIRECTORS OFFICES

RHC LAMINATE

LAMINATE: ESPRESSO BAMBOO
HANDLES: SATIN NICKEL ALUMINUM
TACKBOARD FABRIC: LIGHT



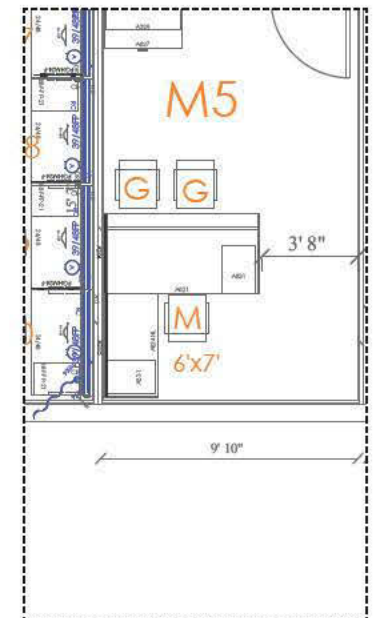
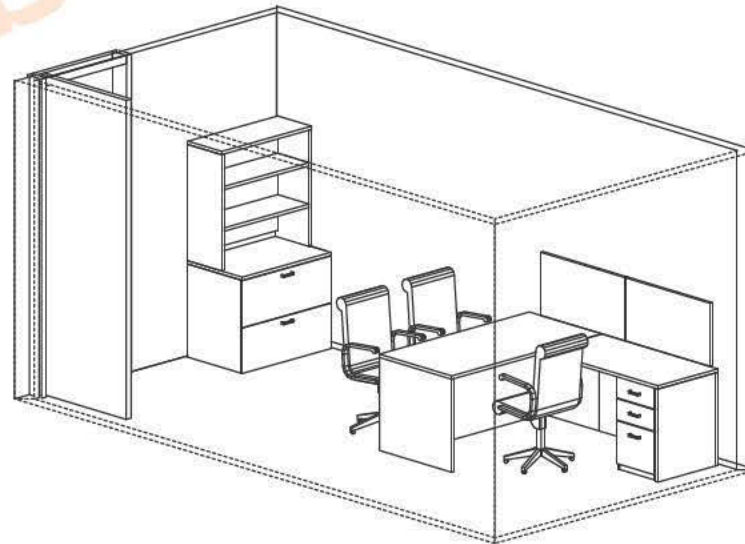
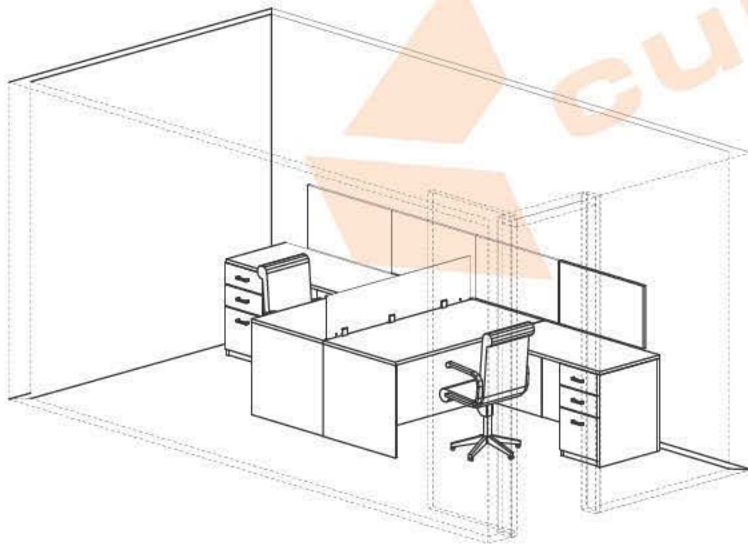
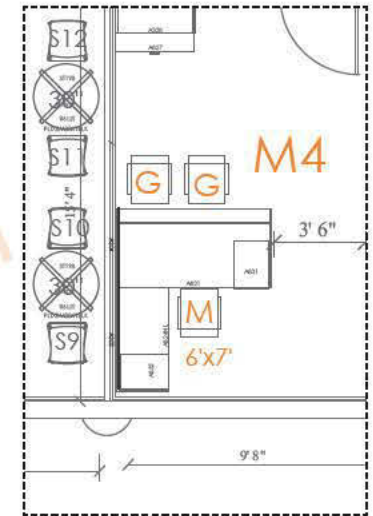
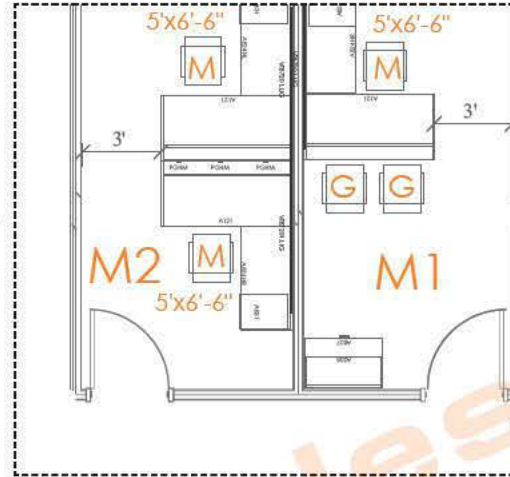
OFFICE SUITES [MANAGERS]

RHC LAMINATE

L-SHAPE DESKS

ACCESSORIES:

- BOX/BOX/FILE PEDESTAL
- BOOKCASE 36X14X39H ABOVE LATERAL FILE
- LATERAL FILE – 2 DRAWERS
- 60"W FROSTED GLASS SCREEN IN M2
- 36"W TACKBOARDS



M-MANAGERS OFFICES

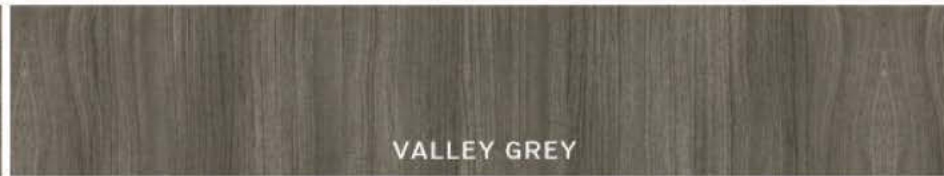
RHC LAMINATE



LAMINATE: VALLEY GREY | SATIN NICKEL HANDLES |
TACKBOARD FABRIC: LIGHT



FLAT



VALLEY GREY

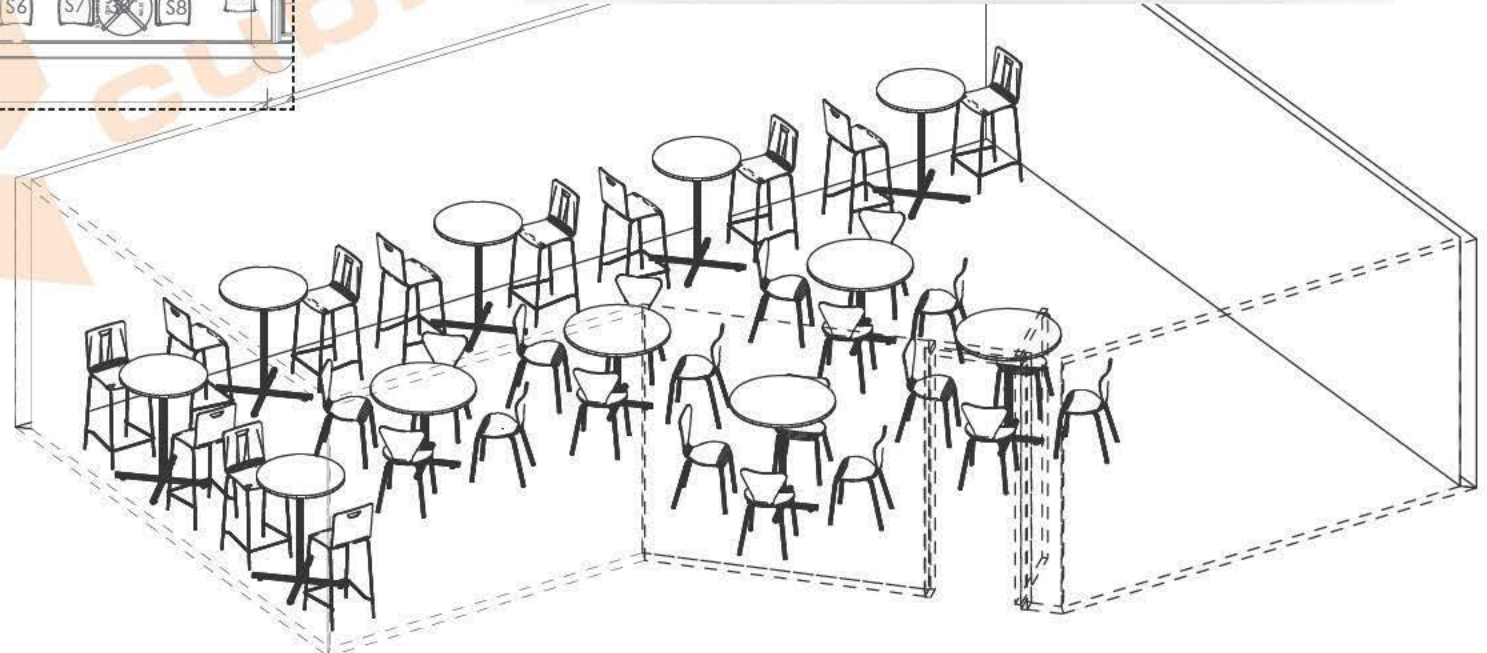
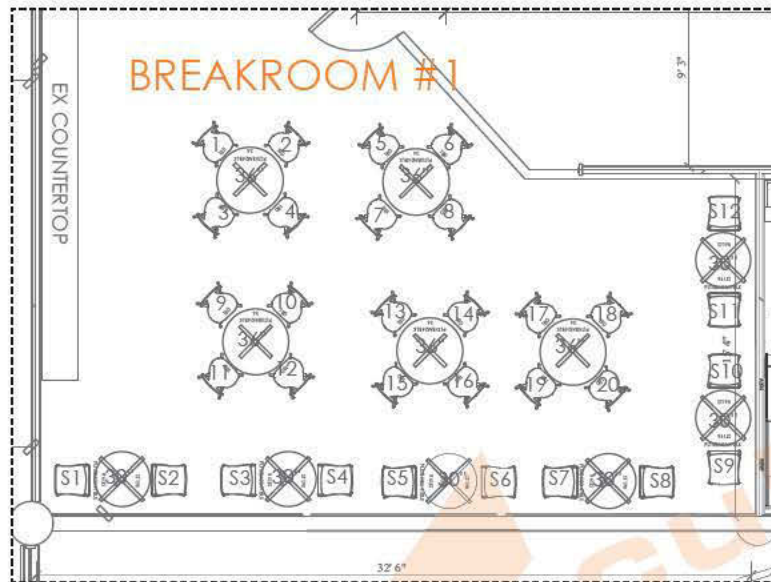


SATIN NICKEL ALUMINUM

BREAKROOM #1

EOC

- 36" DIA PANTRY TABLES @29"H
- 30" DIA BAR HEIGHT TABLES @41"H



STANDARD HEIGHT TABLES

EOC

•36" DIA ROUND TABLE WITH CROSS

BASE:

Cafe-height [41"H]:

QTY: 5

LAMINATE: GREY NEBULA |
EDGE: BU -BLACK | CHROME BASE



CAFE HEIGHT TABLES

EOC

•36" DIA ROUND TABLE WITH CROSS

BASE:

Standard-height [29"H]:

QTY: 5

LAMINATE: GREY NEBULA |
EDGE: BU -BLACK | CHROME BASE



GREY NEBULA



BU-BLACK



CHROME BASE

available in
chrome at an
upcharge



PANTRY SEATING

BLG



STANDARD HEIGHT CHAIRS

QTY:20
QTY:10 CLOUD COLOR
QTY:10 NIGHT COLOR
CHROME BASE
W21.5 x D21.5 x H33 IN.

BAR-HEIGHT CHAIRS

QTY:10
QTY:5 CLOUD COLOR
QTY:5 NIGHT COLOR
CHROME BASE
W22 x D23 x H42 IN



Cloud
(IVC)



Night
(BLK)



Upholstered seat and back structure



Upholstered back and seat structure



With back without chair



Upholstered seat structure with casters



With back and upholstered seat structure chair



Upholstered seat structure with table



TASK SEATING

GTO

QTY:138

[138] CUBICLES

COLOR: BLACK

CHROME BASE

23"w x 24"d x 39.5"h

- Black mesh back with breathable Black mesh fabric seat.
- Pneumatic seat height adjustment
- Height adjustable arms
- Single position tilt lock with tilt tension adjustment
- Twin wheel carpet casters



GTO

QTY:8

[6] PRIVATE OFFICES

[2] DIRECTOR OFFICES

COLOR: BLACK

26"w x 26.5"d x 39.5"h

- Black mesh back with breathable Black mesh fabric seat (stocked)
- Pneumatic seat height adjustment
- Height adjustable arms
- Multiple-position seat tilt lock with an anti-kick back feature
- Adjustable lumbar support
- Synchro-tilt chair control with tilt tension adjustment
- Twin wheel carpet casters



GUEST SEATING

GTO

QTY:22

[8]DIRECTOR OFFICES/[8] PRIVATE OFFICES/
[4] RECEPTION AREA/[2]INTERVIEW ROOM

COLOR: BLACK

22.25"w x 24"d x 34.5"h

- Black mesh back and Black mesh fabric seat (stocked)
- Molded armrests
- Four leg design
- Not UPSable



CUBICLES.COM is a nationwide leader in the world of office furniture and furniture services. We've spent the last 20+ years building and maintaining a vast network of manufacturers, designers, contractors and facilities allowing us to cater to the commercial office, the home office, and everything in between.

CONTRACT OFFICE FURNISHINGS

Our full-service agency provides a dedicated hands-on team of professional designers, specifiers and project managers to deliver your commercial office project from a conceptual dream to a "ready to move in" reality. We are committed to providing every client with quality products, fair pricing, and efficient service.

PRODUCTS INCLUDE:

Cubicles * Desks * Tables * Reception * Conference * Seating
Filing & Storage * Lounge * Breakroom * Sit Stand * Acoustic Tiles
Modular Walls * Glass Walls * Office Carpeting * Home Living
And more!

SERVICES INCLUDE:

Sales & Rentals (New & Used) * Space Planning & Design
Budgeting & Financing * Project Management * Installation &
Logistics * Moving & Warehousing * Inventory Management

WE PROUDLY SERVE:

Corporate * Residential * Government/GSA * Healthcare * Education



WE SERVE ALL AGENCIES, ALL ACROSS AMERICA



Honeywell



 **Nestlé PURINA.**



Collins Aerospace



ONE 70



SIEMENS



REFERENCES AVAILABLE UPON REQUEST



see more at cubicles.com/reviews

 **888-442-8242**